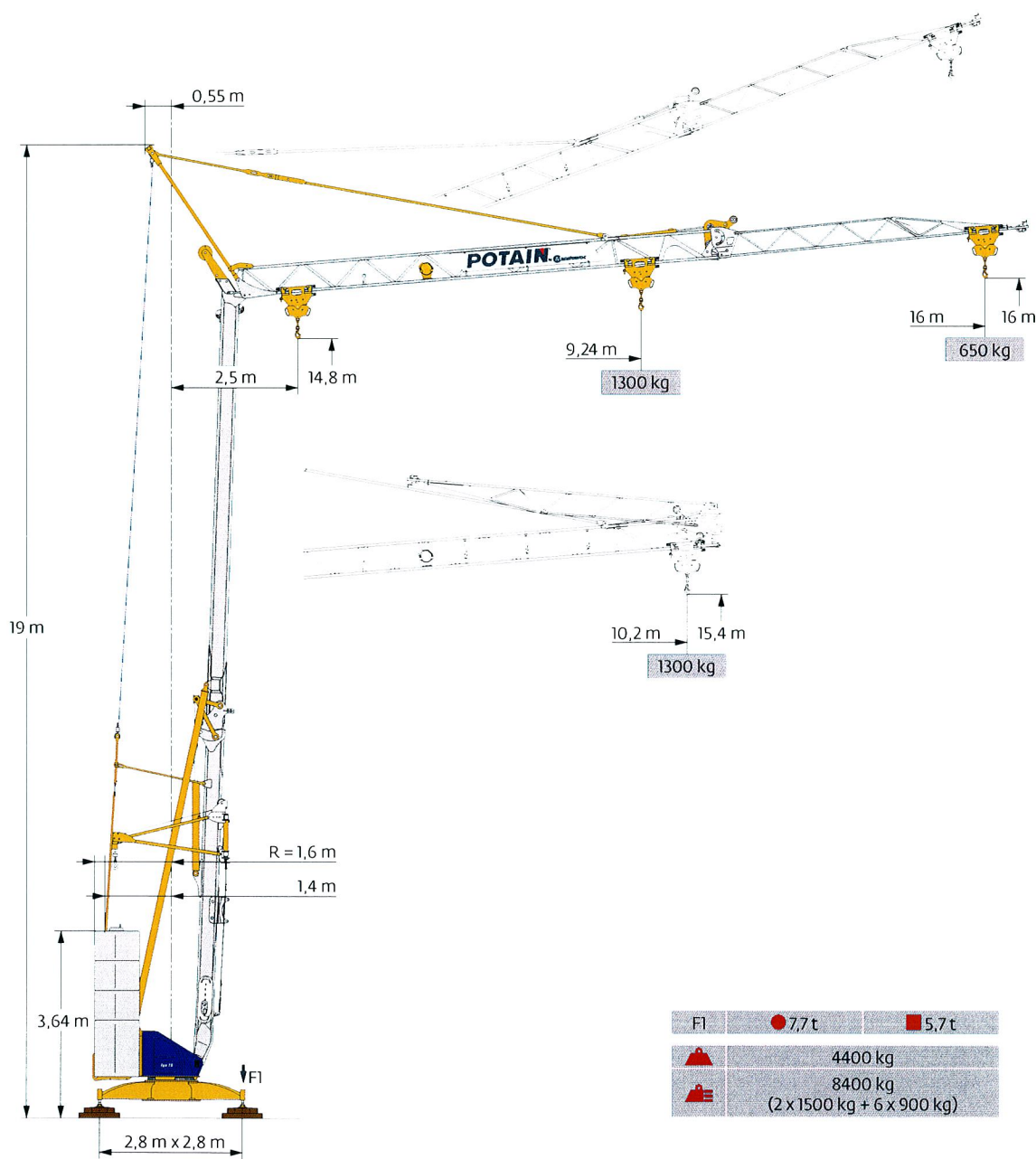
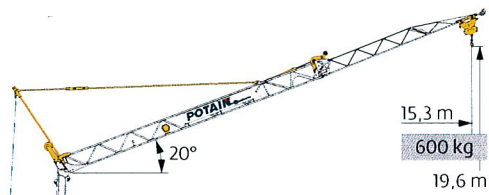
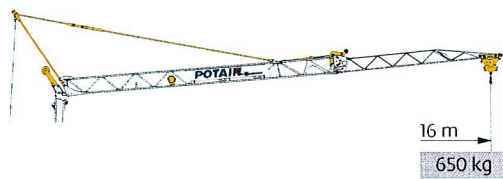
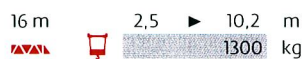
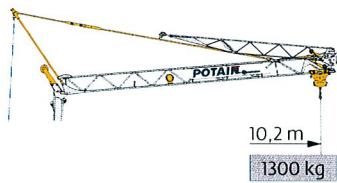

















Potain Igo 10





Courbes de charges / Lastkurven / Load curves / Curvas de cargas / Curve di carico
 Curvas de carga / Кривые нагрузок

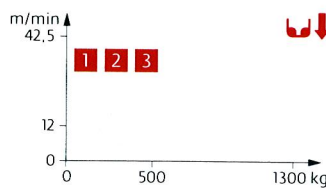
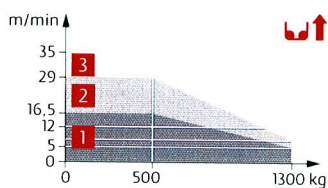


Mécanismes / Triebwerke / Mechanisms / Mecanismos / Meccanismi
 Mecanismos / Механизмы

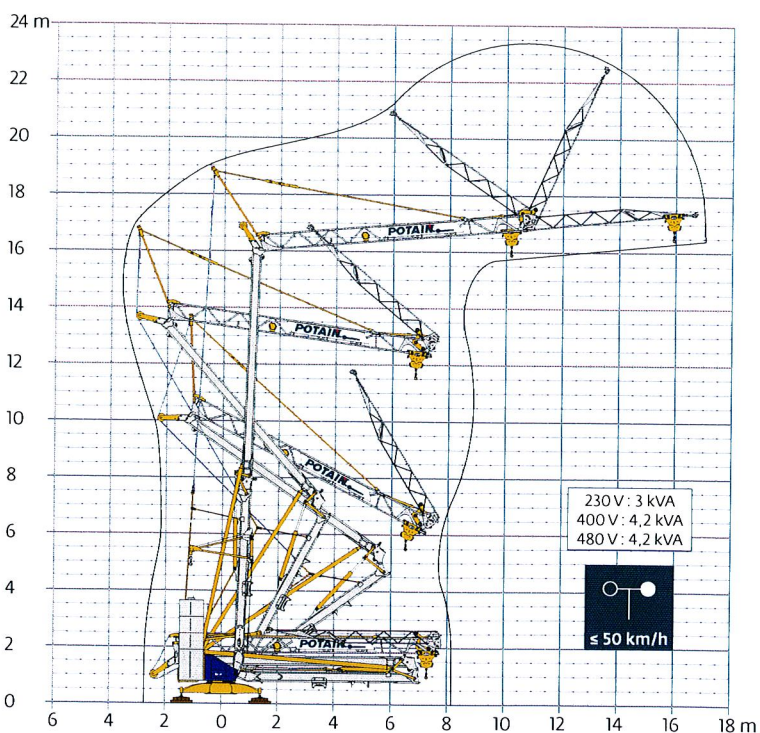
230 V - 50 Hz 400 V - 50 Hz 480 V - 60 Hz						ch - PS hp	kW
	6 LVF 7 Optima	230 V \neq 20 A 1	m/min	 3,5  3,5  5  12  16,5  42,5	3,3	2,4	
			kg	1300 1300 500			
		230 V \neq 32 A 2	m/min	 3,5  3,5  7  12  29  42,5	5,2	3,8	
			kg	1300 1300 500			
	1 D1 V3		m/min	24	1,5	1,1	
	RVF 20		tr/min	0 → 1	1,5	1,1	
				U/min			
			rpm				

 IEC 60204-32	 kVA
230 V (+10% -10%) 50 Hz 400 V (+10% -10%) 50 Hz 480 V (+6% -10%) 60 Hz	230 V 20 A : 4,6 kVA 230 V 32 A : 7,4 kVA 400 V / 480 V : 9,5 kVA

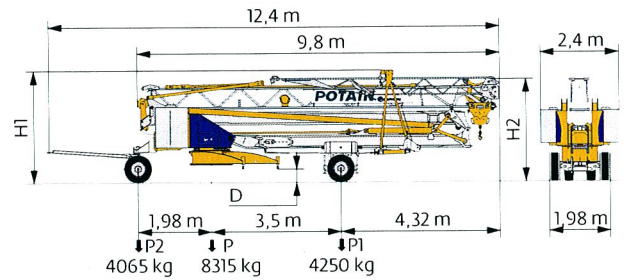
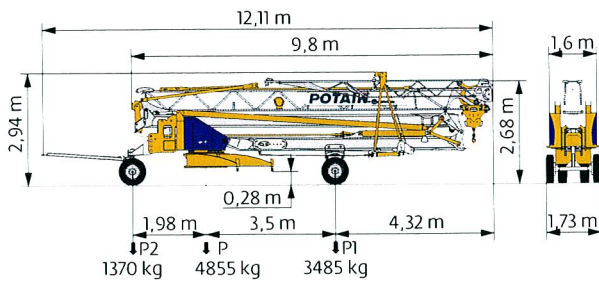
6 LVF 7 Optima



Montage / Montage / Erection / Montaje / Montaggio
 Montagem / Монтаж



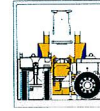
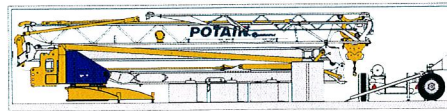
Transport / Transport / Transport / Transporte / Trasporto
Transporte / Транспортировка



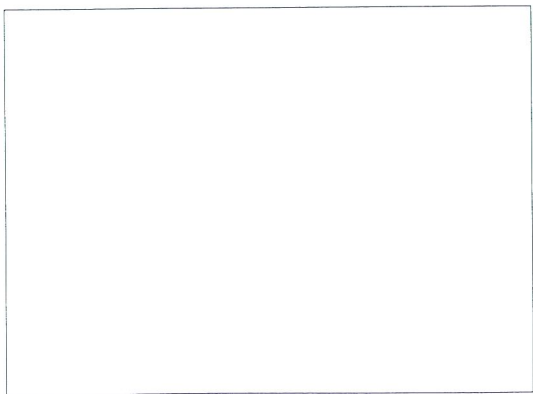
	km/h
DS62/S30	10
..... /.....	i

	km/h	D (m)	H1 (m)	H2 (m)
DS65/S65	25	0,4/0,25	3,07/2,92	2,8/2,65
..... /.....	i			

Conteneur High Cube 40' / Container High Cube 40' / Conteneur High Cube 40' / Contenedor High Cube 40'
Container High Cube 40' / Contentor High Cube 40' / 40-футовый контейнер повышенной вместимости High Cube



	FR	DE	EN	ES	IT	PT	RU
R	Rayon de giration	Schwenk radius	Rear slewing radius	Radio de giro	Raggio di rotazione	Raio de rotação	Задний габарит
i	Nous consulter	Auf Anfrage	Consult us	Consultarnos	Consultateci	Consultar-nos	Проконсультируйтесь у нас
●	Réactions en service	Reaktionskräfte in Betrieb	Reactions in service	Reacciones en servicio	Reazioni in servizio	Reacções em serviço	Реакция при работе
■	Réactions hors service	Reaktionskräfte außer Betrieb	Reactions out of service	Reacciones fuera de servicio	Reazioni fuori servizio	Reacções fora de serviço	Реакция в покое
▲	Poids à vide, sans lest, sans trais de transport, avec flèche maxi et hauteur standard	Gewicht ohne Last, ohne Ballast, ohne Transportachsen mit max Auslager und Standardhöhe	Weight without load, without ballast, without transport axes, with max jib and standard height	Peso en vacío, sin lastre, sin trenes de transporte con flecha y altura estándar	Peso a vuoto, senza assali di trasporto, con braccio max e altezza standard	Peso em vazio, sem lastro, sem eixos de transporte com lança máxima e altura standard	Вес без груза, без балласта, без осей для транспортировки, с максимальным вылетом стрелы и стандартной высотой
⚖	Poids total du lest	Ballast-Gesamtgewicht	Total ballast weight	Peso total del lastre	Peso totale della Zavorra	Peso total do lastro	Общий вес балласта
⬆	Levage	Heben	Hoisting	Elevación	Sollevarmento	Elevação	Подъем
⬆	Distribution	Katzfahren	Trolleying	Distribución	Distribuzione	Distribuição	Перемещение по стреле
⬆	Orientation	Schwenken	Slewing	Orientación	Rotazione	Rotação	Поворот
⚡	50 Hz Monofasé	50 Hz Einphasige	50 Hz Single phase	50 Hz Monofásica	50 Hz Monofase	50 Hz monofásica	Однофазное напряжение 50Hz
⚡	Puissance requise	Erforderliche Leistung	Required power	Potencia Necesária	Potenza richiesta	Potência Necessária	Потребляемая мощность
⚠	Document commercial non contractuel. Pour toute information technique se référer à la notice correspondante	Unverbindliches Vertriebsdokument. Für technische Informationen, siehe die entsprechenden Anweisungen	This commercial document is not legally binding. For any technical information, please refer to the corresponding instructions	Documento comercial no contractual. Para cualquier información técnica, ver la noticia correspondiente	Documento commerciale non vincolante. per tutte le informazioni tecniche fare riferimento al catalogo istruzioni	Documento comercial não contractual. Para qualquer informação técnica complementar consultar as respectivas instruções	Этот коммерческий документ не является юридически обязательным. Для получения технической информации, см соответствующие инструкции



www.manitowoc.com

Americas
Manitowoc, Wisconsin, USA
Tel: +1 920 684 6621
Fax: +1 920 683 6277

Shady Grove, Pennsylvania, USA
Tel: +1 717 597 8121
Fax: +1 717 597 4062

Europe, Middle East, Africa
Dardilly, France
Tel: +33 (0)4 72 18 20 20
Fax: +33 (0)4 72 18 20 00

China
Shanghai, China
Tel: +86 21 6457 0066
Fax: +86 21 6457 4955

Greater Asia-Pacific
Singapore
Tel: +65 6264 1188
Fax: +65 6862 4040