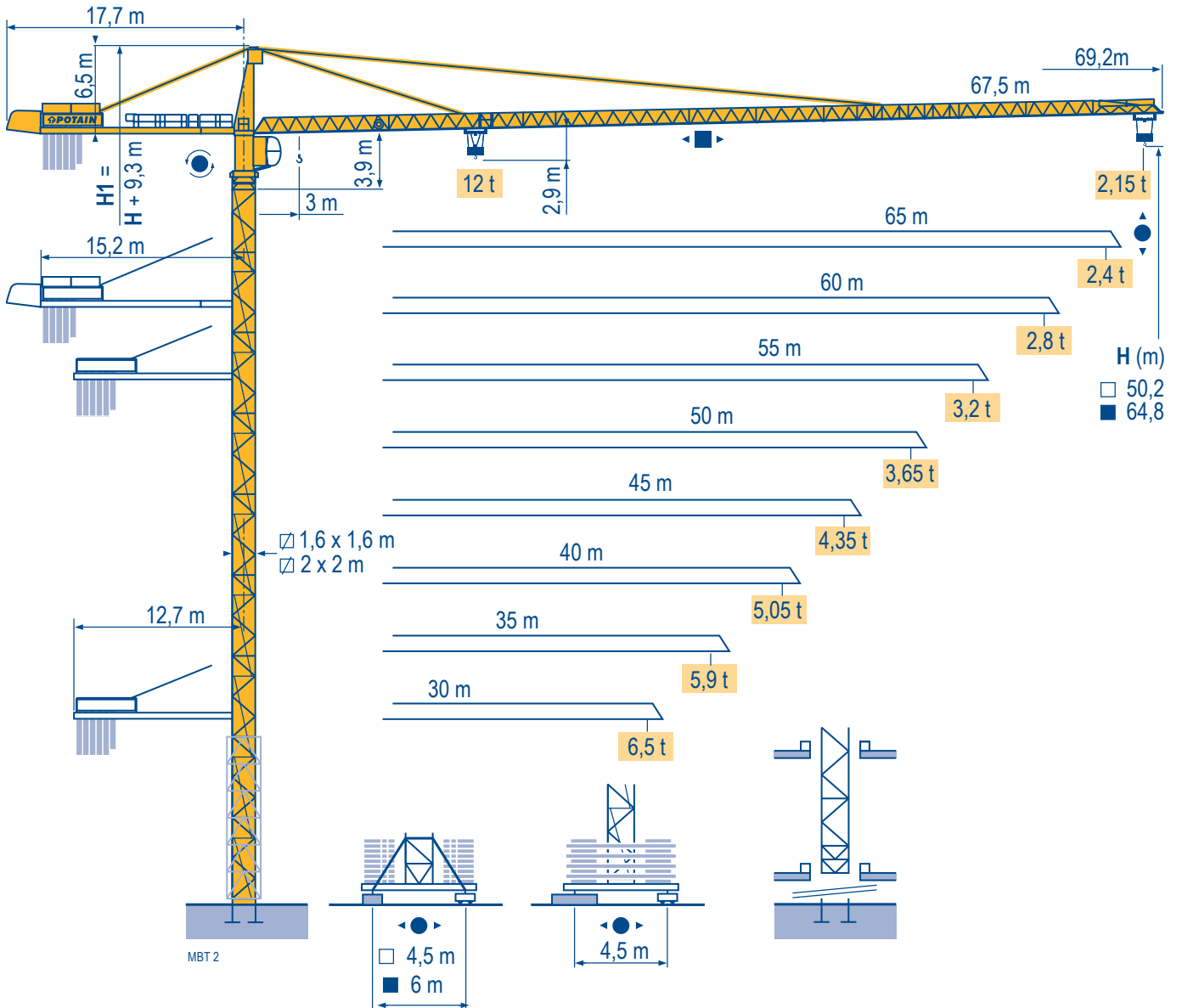


# MD 238 A J12



**TOPKIT**

**CE** FEM 1.001-A3

Mat / Réactions  $\square$  1,6 m

Maste / Eckdrücke  $\triangle$   
30 m  $\Rightarrow$  60 m

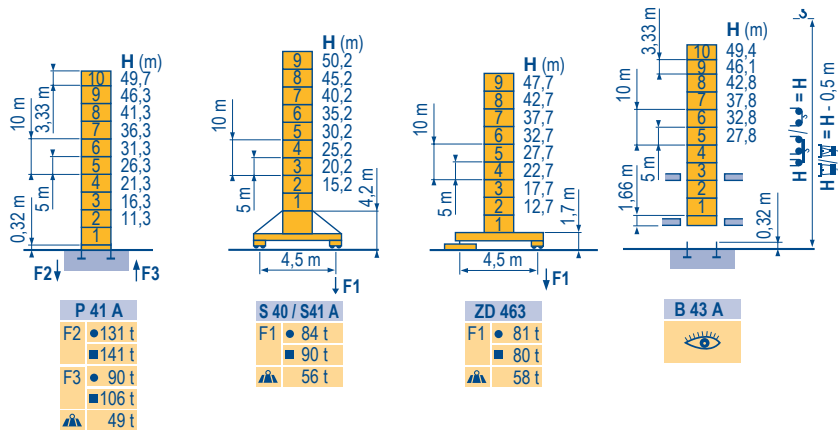
Masts / Reactions

Mástil / Reacciones

Torre / Reazioni

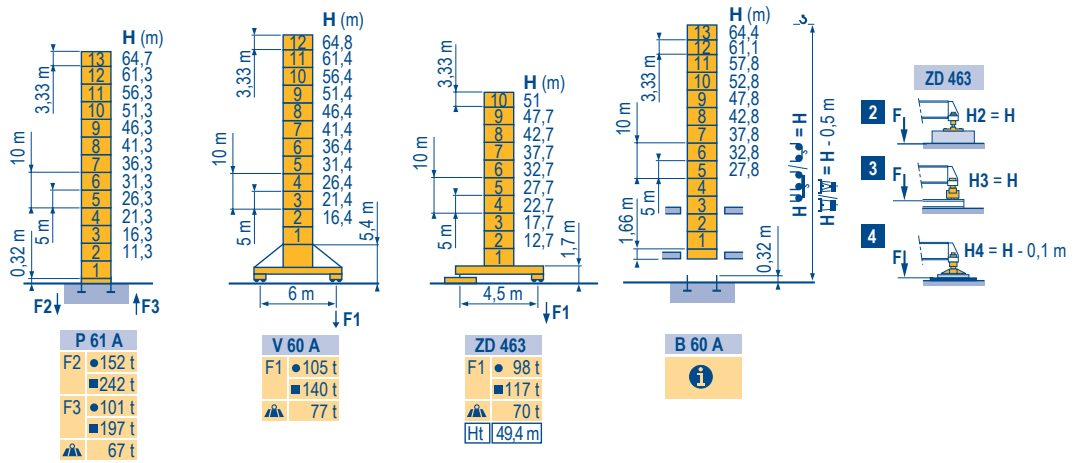
Tramo / Reações

MBT 2



$\square$  2 m

$\triangle$   
30 m  $\Rightarrow$  67,5 m



Télescopage sur dalles

Kletterkrane im Gebäude

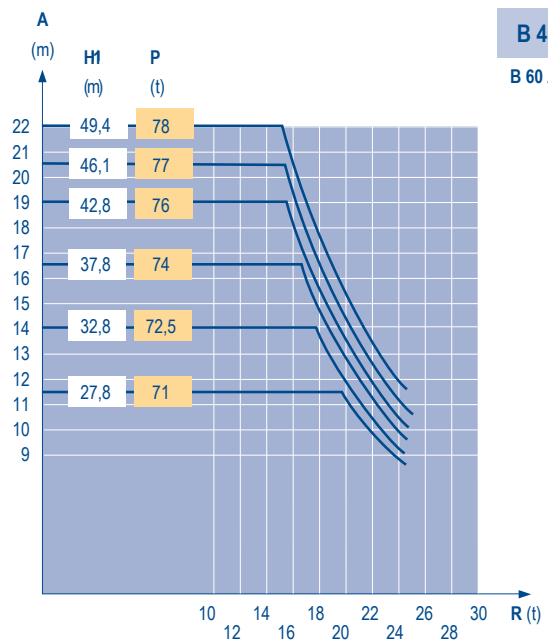
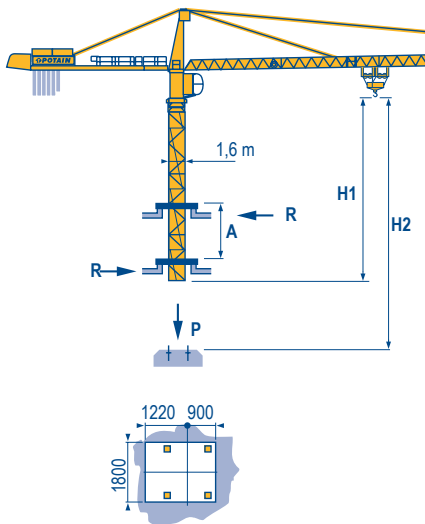
Climbing crane

Telescopage gruas trepadoras

Gru in cavedio

Telescopagem sobre lajes

MBT 1



B 43 A

B 60 A  $\text{\textcircled{i}}$

TOPKIT  
MD 238 A J12

POTAIN  $\text{\textcircled{P}}$

**F**  
● Réactions en service  
■ Réactions hors service  
A vide sans lest (ni train de transport) avec flèche et hauteur maximum.  
**i** Nous consulter  
Hauteur maxi roulante

**D**  
● Reaktionskräfte in Betrieb  
■ Reaktionskräfte außer Betrieb  
Ohne Last, Ballast (und Transportachse), mit Maximalausleger und Maximalhöhe.  
Auf Anfrage  
Fahrbare max. Höhe

**GB**  
● Reactions in service  
■ Reactions out of service  
Without load, ballast (or transport axes), with maximum jib and maximum height.  
Consult us  
Travelling maximum height

**E**  
● Reacciones en servicio  
■ Reacciones fuera de servicio  
Sin carga, sin lastre, (ni tren de transporte), flecha y altura máxima.  
Consultarnos  
Altura máxima móvil






**I**  
● Reazioni in servizio  
■ Reazioni fuori servizio  
A vuoto, senza zavorra (ne assali di trasporto) con braccio massimo e altezza massima.  
Consultateci  
Altezza massima gru traslante


**P**  
● Reações em serviço  
■ Reações fora de serviço  
Sem carga (nem trem de transporte)- sem lastro com lança e altura máximas.  
Consultar-nos  
Altura máxima sobre translação

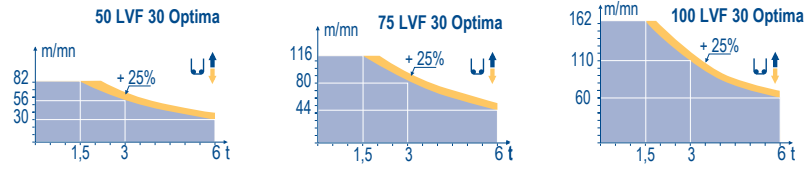







Mécanismes  
Antriebe  
Mechanisms  
Meccanismi  
Mecanismos


MBT 5

		↕ ↑						↕ ↕ ↑						ch - PS hp	kW		
↕	50 LVF 30 Optima	m/min	2,6 → 10 → 30 → 40 → 56 → 82						1,3 → 5 → 15 → 20 → 28 → 41						50	37	337 m
		t	6 6 6 4,5 3 1,5						12 12 12 9 6 3								
	75 LVF 30 Optima	m/min	3,6 → 44 → 56 → 80 → 116						1,8 → 22 → 28 → 40 → 58						75	55	766 m
		t	6 4,5 3 1,5						6 9 6 3								
	100 LVF 30 Optima	m/min	0 → 60 → 79 → 110 → 162						0 → 30 → 40 → 55 → 81						100	75	941 m
		t	6 4,5 3 1,5						12 9 6 3								
↔	6 DVF 4	m/min	0 → 50 (12 t) 0 → 100 (6 t) 0 → 120 (3 t)												5,5	4	
↻	RVF 152 Optima +	tr/min U/min rpm	0 → 0,8												2 x 5,5	2 x 4	
	RT 324 R ≥ 10 m	m/min	12,5 - 25												2 x 7	2 x 5,2	
	RT 443 A1 2V R ≥ 10 m	m/min	15 - 30												4 x 5	4 x 3,7	
	RT 443 A1 2V	m/min	15 - 30												4 x 5	4 x 3,7	
	RT 544 A1 2V R ≥ 13 m	m/min	13,5 - 27												4 x 7	4 x 5,2	

CEI 38		IEC 38	<b>kVA</b>
400 V (+6% -10%) 50 Hz		50 LVF : 70 kVA 75 LVF : 95 kVA 100 LVF : 120 kVA	



	F	D	GB	E	I	P
	Levage	Heben	Hoisting	Elevación	Sollevamento	Elevação
	Distribution	Katzfahren	Trolleying	Distribución	Distribuição	Distribuição
	Orientation	Schwenken	Slewing	Orientación	Rotazione	Rotação
	Translation	Kranfahren	Travelling	Traslación	Traslazione	Translação
	Uniquement avec mâts de section 2 m	Nur mit Mastwerk Querschnitt 2 m	Only with masts 2 m cross-section	Sólo con mastiles de 2 m	Solo con torre da 2 m	Somente com coluna de secção de 2 m

 Document commercial non contractuel. Pour toute information technique se référer à la notice correspondante. Unverbindliches Vertriebsdokument. Für technische Informationen, siehe die entsprechenden Anweisungen. This commercial document is not legally binding. For any technical information, please refer to the corresponding instructions. Documento comercial non contractuel. Para cualquier información técnica, ver la noticia correspondiente. Documento commerciale non vincolante, per tutte le informazioni tecniche fare riferimento al catalogo istruzioni. Documento comercial não contratual. Para qualquer informação técnica complementar consultar as respectivas instruções.





**Americas**  
Tel : +1 888 479 7278  
Tel : +1 717 593 2000

**Europe – Middle East – Africa**  
Tel : +33 (0) 4 72 81 50 00  
Tel : +44 (0) 191 522 2000

**Asia – Pacific**  
Tel : +65 6264 1188  
Fax : +65 6862 4142

[www.manitowoccrane.com](http://www.manitowoccrane.com)

**18, rue de Charbonnières - B.R.173  
69132 ECULLY Cedex - France**  
Tél. : +33 (0) 4 72 18 20 20  
Fax. : +33 (0) 4 72 18 20 00  
[www.manitowoccrane.com](http://www.manitowoccrane.com)

**TOPKIT MD 238 A J12**  
Réf. 2004 45 MBT 5

Copyright.Reproduction interdite © POTAIN 2004

Réalisation Secdoc